

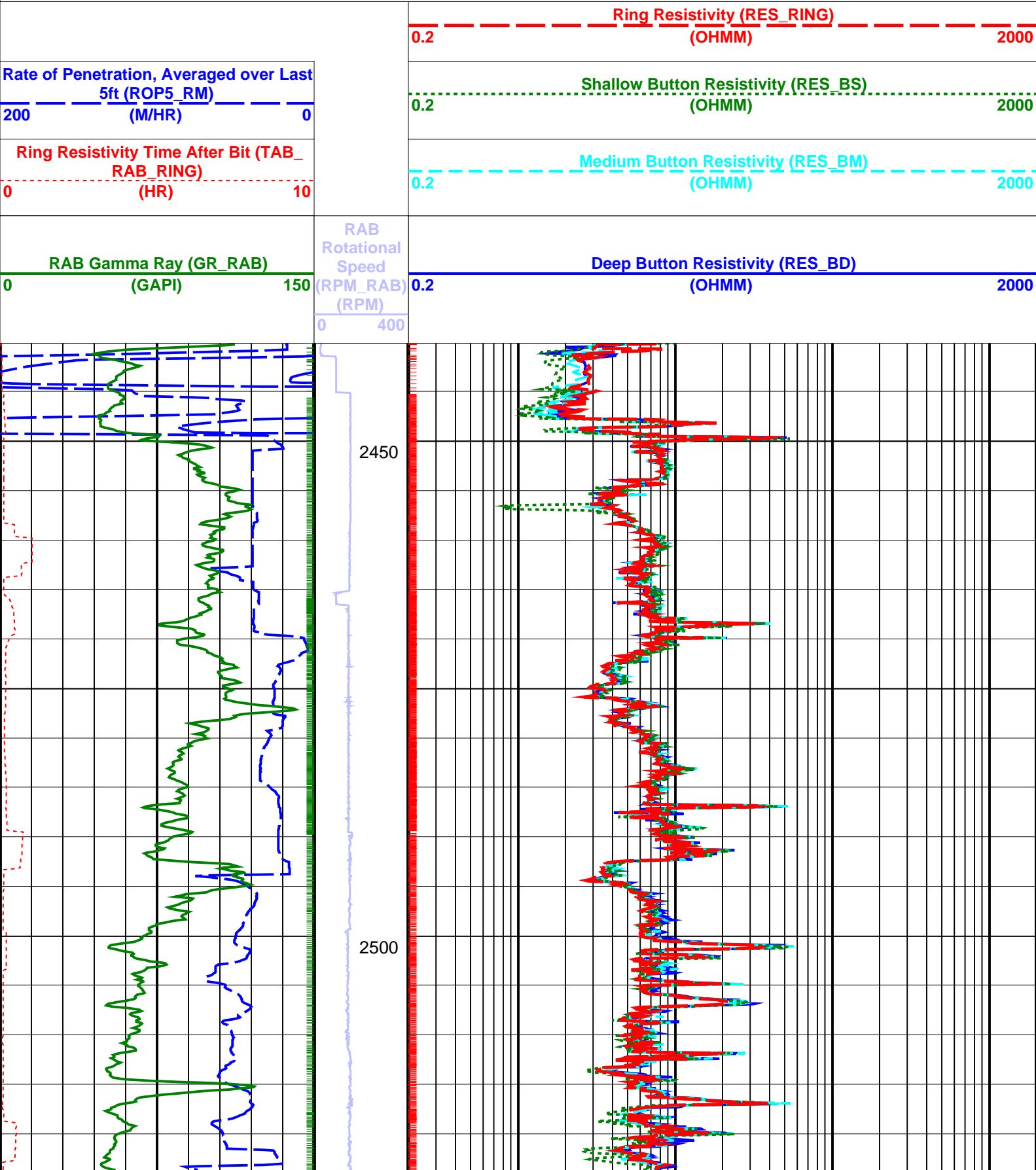
IDEAL Version: ID13_0C_08
IDF

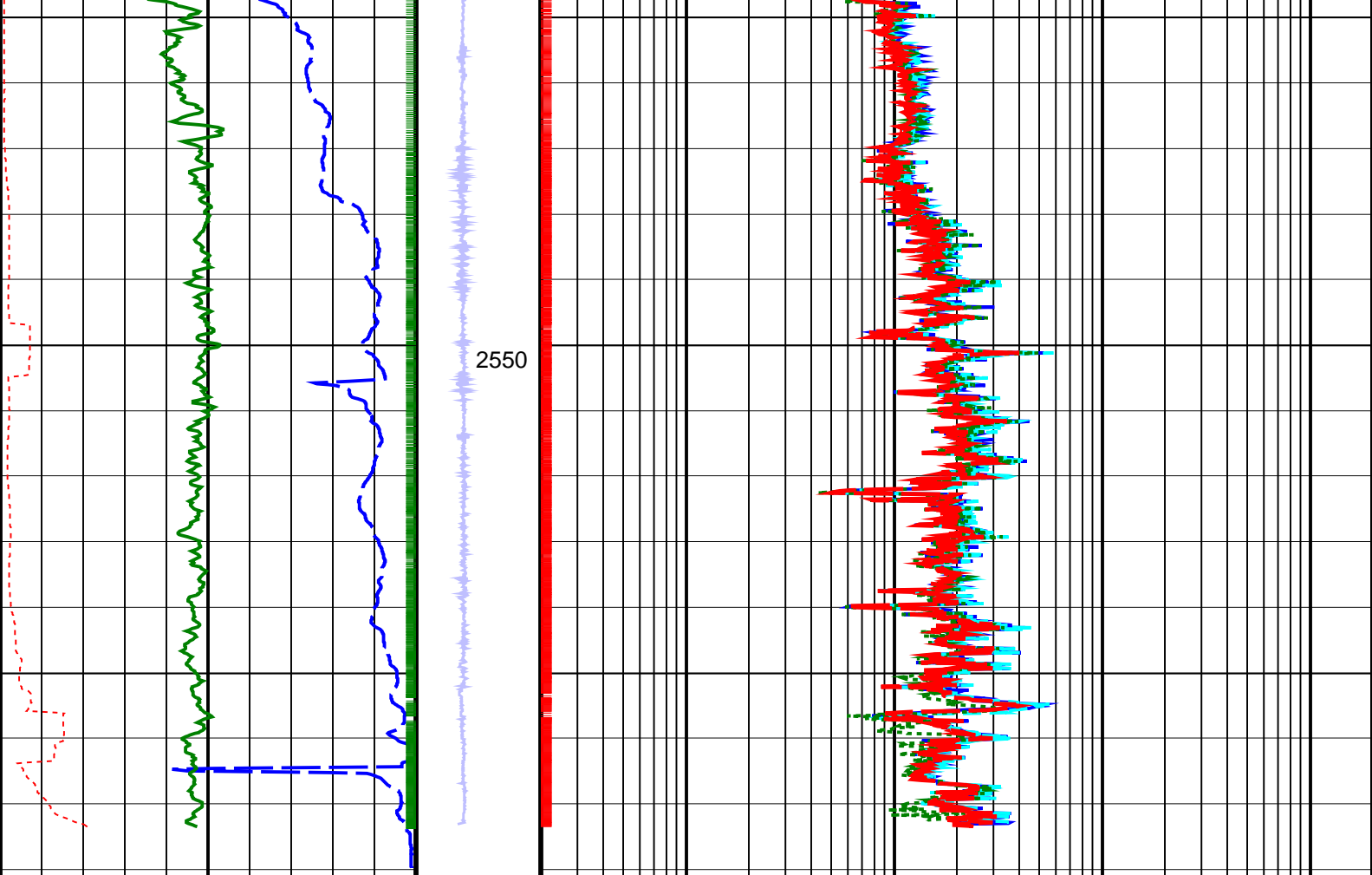
RAB id13_0c_02

Format: GeoVISION Resistivity Log_1 Vertical Scale: 1:500 Graphics File Created: 13-Jun-2008 02:37

PIP SUMMARY

- Gamma Ray Samples
- Ring Samples





<div>RAB Gamma Ray (GR_RAB) (GAPI)</div> <div>0150</div>	<div>RAB Rotational Speed (RPM_RAB) (RPM)</div> <div>0400</div>	<div>Deep Button Resistivity (RES_BD) (OHMM)</div> <div>0.22000</div>
<div>Ring Resistivity Time After Bit (TAB_RAB_RING) (HR)</div> <div>010</div>		<div>Medium Button Resistivity (RES_BM) (OHMM)</div> <div>0.22000</div>
<div>Rate of Penetration, Averaged over Last 5ft (ROP5_RM) (M/HR)</div> <div>2000</div>		<div>Shallow Button Resistivity (RES_BS) (OHMM)</div> <div>0.22000</div>
		<div>Ring Resistivity (RES_RING) (OHMM)</div> <div>0.22000</div>

PIP SUMMARY	
+	Gamma Ray Samples
+	Ring Samples

IDEAL Version: ID13_0C_08	
IDF	
RAB	id13_0c_02